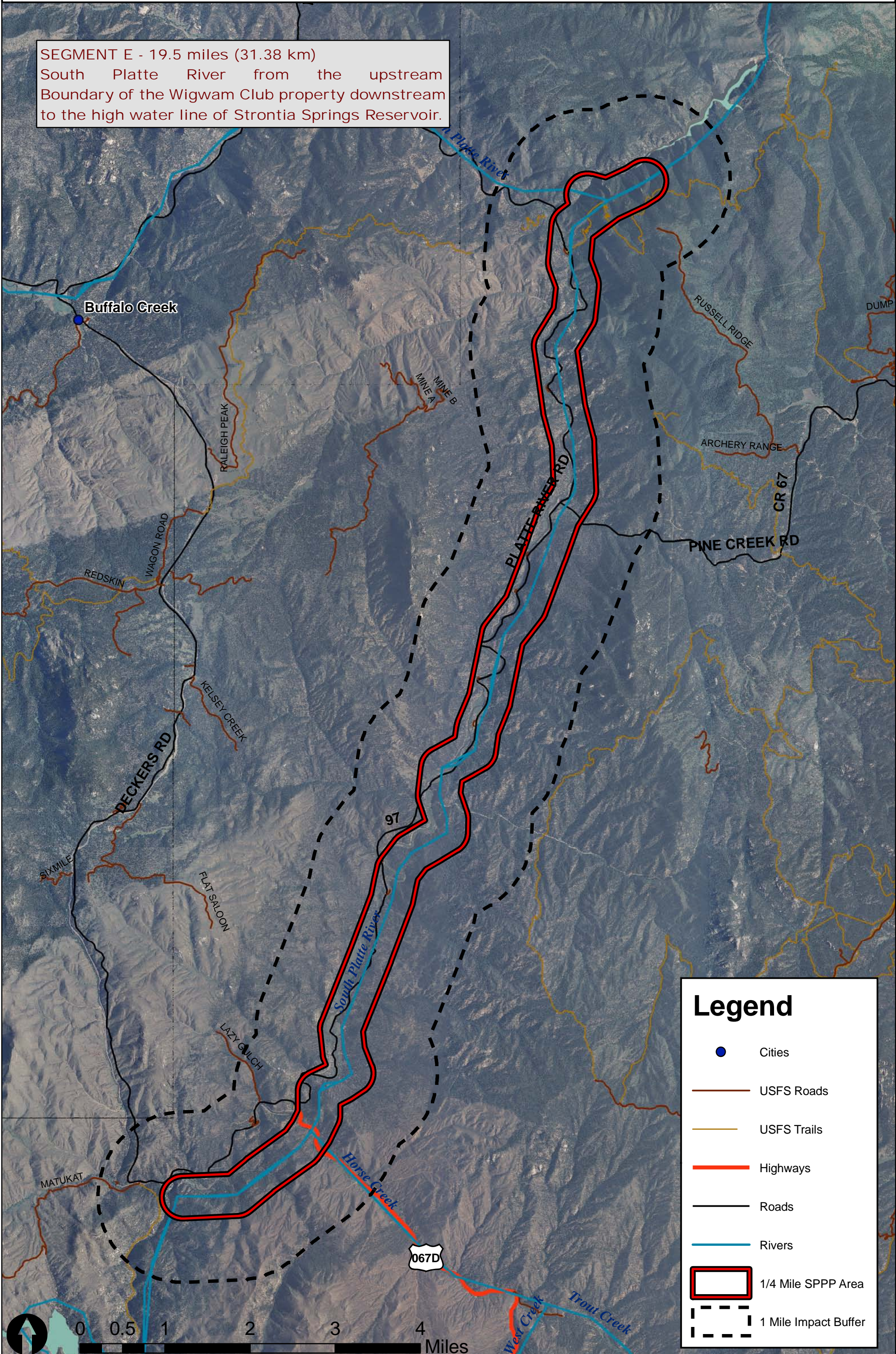


# SEGMENT E

SEGMENT E - 19.5 miles (31.38 km)  
South Platte River from the upstream  
Boundary of the Wigwam Club property downstream  
to the high water line of Strontia Springs Reservoir.



## Legend

- Cities
- USFS Roads
- USFS Trails
- Highways
- Roads
- Rivers
- ▭ 1/4 Mile SPPP Area
- - - 1 Mile Impact Buffer