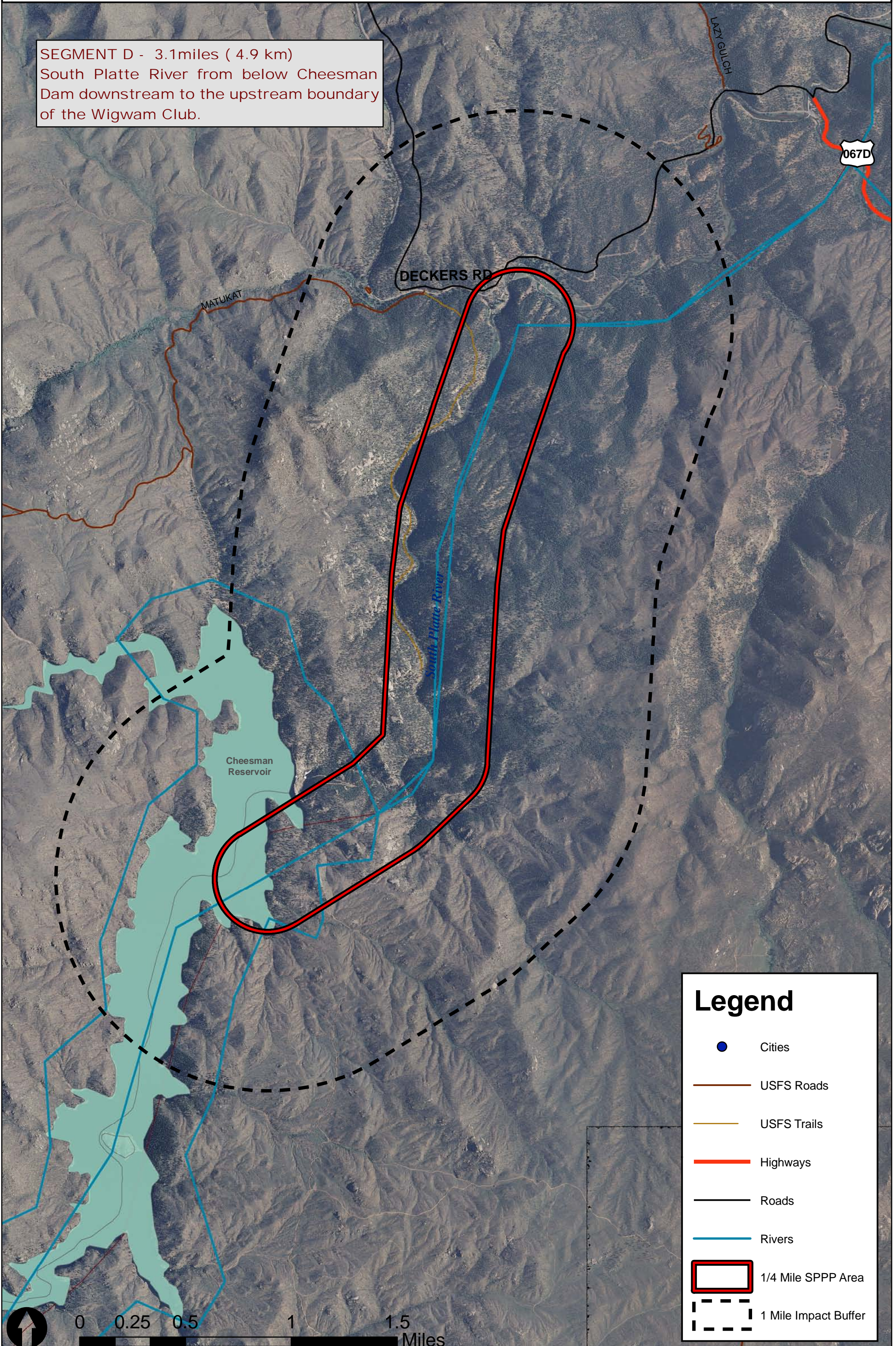


SEGMENT D

SEGMENT D - 3.1 miles (4.9 km)
South Platte River from below Cheesman Dam downstream to the upstream boundary of the Wigwam Club.



Legend

- Cities
- USFS Roads
- USFS Trails
- Highways
- Roads
- Rivers
- ▭ 1/4 Mile SPPP Area
- - - 1 Mile Impact Buffer

