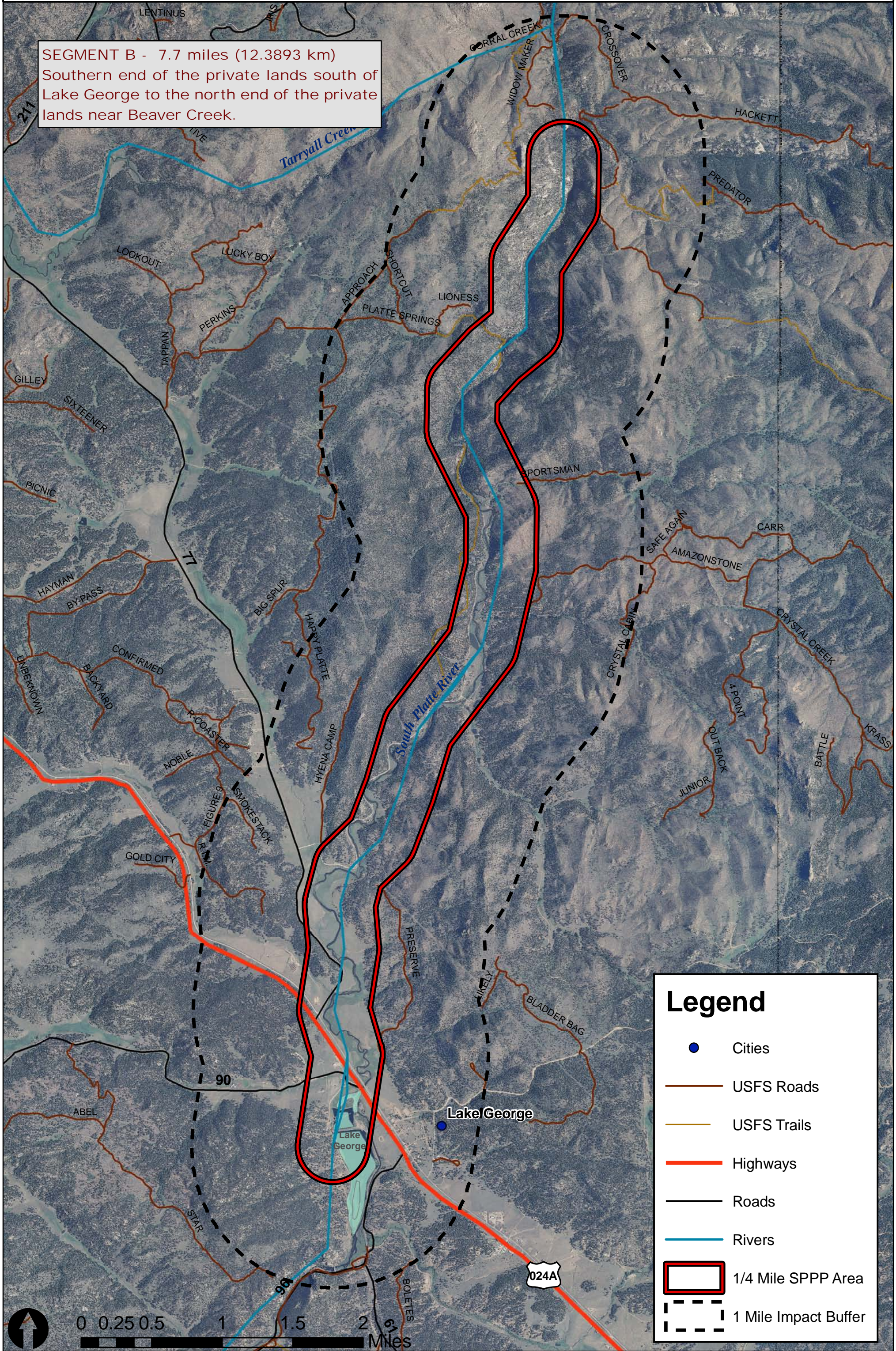


SEGMENT B

SEGMENT B - 7.7 miles (12.3893 km)
Southern end of the private lands south of Lake George to the north end of the private lands near Beaver Creek.



Legend

- Cities
- USFS Roads
- USFS Trails
- Highways
- Roads
- Rivers
- ▭ 1/4 Mile SPPP Area
- - - 1 Mile Impact Buffer