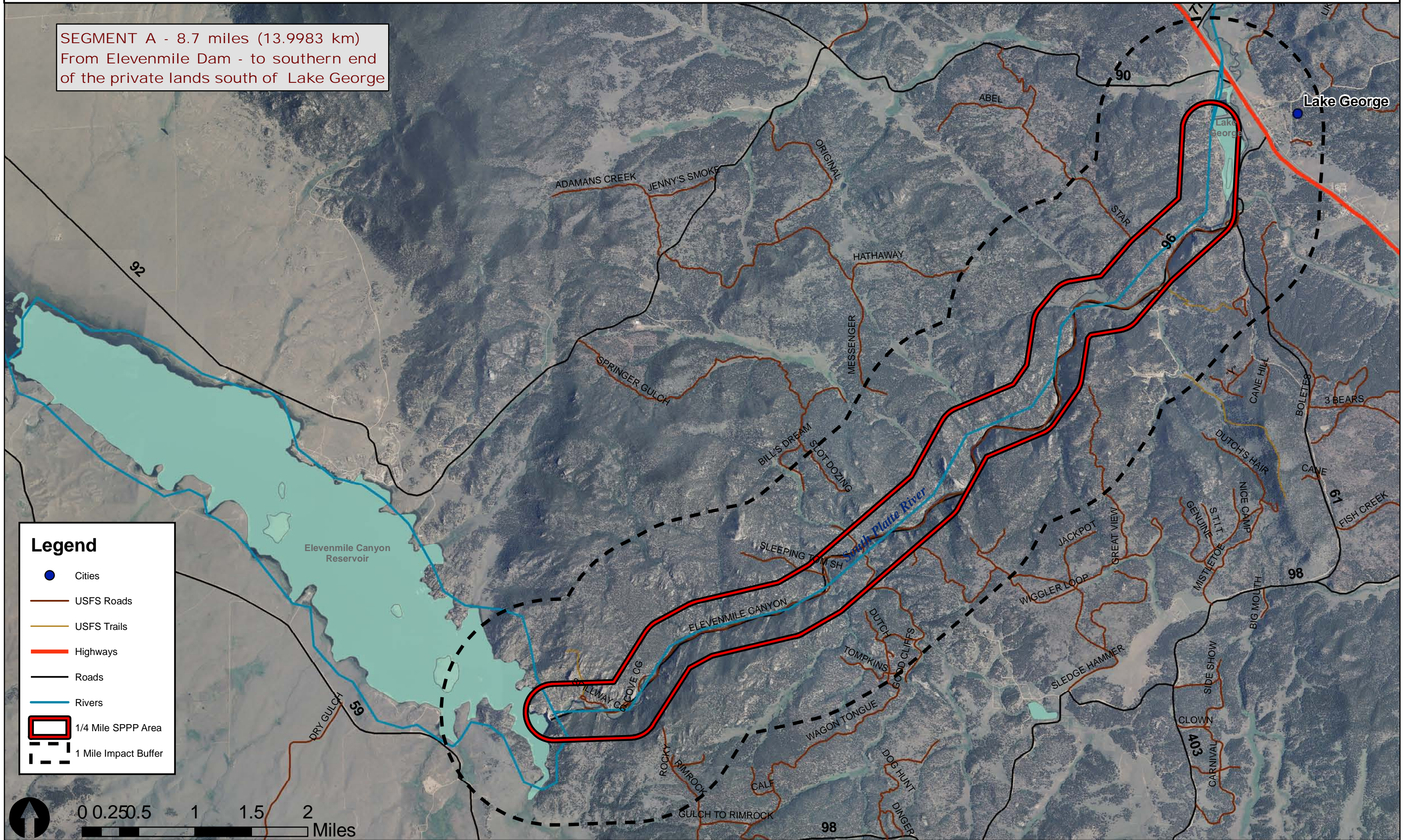


SEGMENT A

SEGMENT A - 8.7 miles (13.9983 km)
From Elevenmile Dam - to southern end
of the private lands south of Lake George



Legend

- Cities
- USFS Roads
- USFS Trails
- Highways
- Roads
- Rivers
- ▭ 1/4 Mile SPPP Area
- - - 1 Mile Impact Buffer

