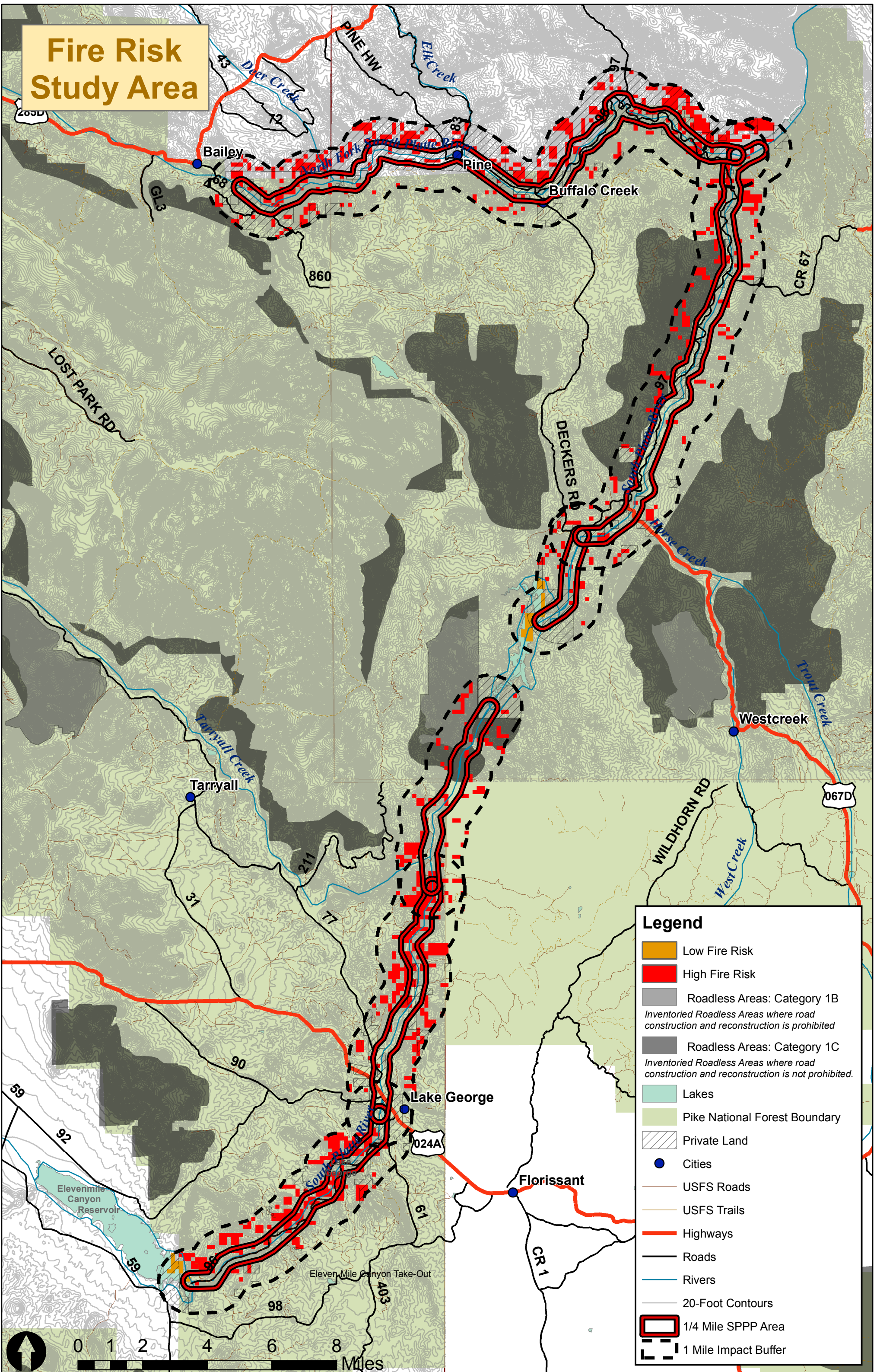


# Fire Risk Study Area



### Legend

- Low Fire Risk
- High Fire Risk
- Roadless Areas: Category 1B  
*Inventoried Roadless Areas where road construction and reconstruction is prohibited*
- Roadless Areas: Category 1C  
*Inventoried Roadless Areas where road construction and reconstruction is not prohibited.*
- Lakes
- Pike National Forest Boundary
- Private Land
- Cities
- USFS Roads
- USFS Trails
- Highways
- Roads
- Rivers
- 20-Foot Contours
- 1/4 Mile SPPP Area
- 1 Mile Impact Buffer

